



Walthamstow Academy

The best in everyone™

Part of United Learning

Sixth Form Prospectus



...best lesson, best day, best year, best future...

Welcome to Walthamstow Academy

Walthamstow Academy is a dynamic, thriving and successful academy at the centre of the local community. I believe that at the heart of our success are three key factors. The first is the dedication of our staff, who are all wholly determined to do whatever it takes to get the best possible outcomes for every single one of our students. This involves nurturing every child and tracking their progress to make sure that they are on track and that we are bringing out the best in them.

Second, we are committed to raising ambition through very high expectations and a belief that every child can achieve great things if they have the opportunity, the drive and the support that they need. As a result, our students have these expectations of themselves. They want to learn, they want to be successful and they want to be proud. Our attendance is outstanding: students want to be here, they describe being part of Walthamstow Academy as like being part of a family.

Third, at Walthamstow Academy we believe that there is no time to waste. We make the most of every day. For every minute of every lesson, we make sure that our students are happy, engaged and learning. They know they need to make the most of every opportunity they are offered and we want to be there to make sure they succeed. I want all our students to have hopes and dreams for the future that mean they are challenging themselves to be the best they can be. Come to Walthamstow Academy and see for yourself - I look forward to meeting you.



Ms Emma Skae, Principal BSc BEd MA NPQH

Chair of Governors



I would like to welcome you to the latest Prospectus from Walthamstow Academy; opened in 2006 as an Academy sponsored by the United Learning Trust.

United Learning is a group of schools and Academies whose sole aim is to provide outstanding education to children and young people across the country. We seek to improve the life chances of all the children and young people we serve and make it our mission to bring out 'the best in everyone' – students, staff, parents and the wider community. Since 2009 the Academy has been led by an outstanding Principal in Emma Skae. Emma brings vision, enthusiasm, experience and a great drive to bring out the very best in all at the Academy. She is well supported by dedicated teams of staff who always impress me by their efforts to enable our students to succeed and foster a can do attitude in our students.

The Academy has been rated as being Good by Ofsted. We now move forward with the aim of being outstanding in everything we do. Our sixth form continues to go from strength to strength with every sixth form student who chose to do so progressing to university in 2019; 44% went to the elite Russell Group of universities. Additionally I am impressed by the range of extra-curricular activities which enhance our students' experiences and help build confident young people.

While we continue to raise academic standards and want our students to achieve outstanding academic results, the Academy takes its pastoral responsibilities very seriously. We have a commitment to provide a supportive, happy and caring environment believing this will allow all of our students to develop their full potential. We aim to deliver United Learning's key aim and bring out "the best in everyone".

Please visit us to meet the staff and students and see our impressive facilities. I hope you will decide to become part of our future.

Geoff Skewes, Chair of Governors



Sixth Form

Walthamstow Academy Sixth Form continues to be a place where we strive for the best for every student, consistently producing strong A Level and BTEC results over the last few years.

We offer a rigorous, inclusive and supportive environment where students are academically challenged and are role models for younger students within the Academy. We give these older students the freedom, respect and responsibility they have earned as young adults, within our framework of strong support, close monitoring and high expectations.

Our consistent results demonstrate that Walthamstow Academy Sixth Form enables progression to all university courses and careers, allowing students to study in an environment in which they are understood and cared for.

The Sixth Form offers:

- A wide ranging curriculum of A Level and BTEC National Vocational courses
- Experienced and well qualified teachers
- Myriad student leadership opportunities
- Opportunities for personal development outside the classroom through extra and super curricular activities
- Opportunities for personal development to understand careers and employment through networking, insight days and work experience opportunities
- Personal tutoring
- Preparation for university and adult life
- Free textbooks & revision guidelines in every subject
- Free Chromebook for the duration of your studies





General Advice

The key to success in the Sixth Form is studying the right courses at the right level.

At Walthamstow Academy Sixth Form students take the first steps towards a successful career, as they begin life as young adults.

When considering Post 16 courses, it is important for students to take into account their future intended career pathway. As most students seek to continue into higher education it is important to consider university course entry requirements when choosing Advanced Levels or vocational courses.

In addition to the academic entry criteria for Walthamstow Academy Sixth Form, a good record of behavior, attitude to learning, punctuality and minimum 95% attendance is also expected.



The Best in Everyone

Our motto is ‘the best in everyone’ and we set high standards with clear expectations. We focus on ambition, underpinned by excellent teaching and learning. Staff, students and parents work together and uphold the same high standards to ensure that ‘the best in everyone’ means:

**...best lesson, best day,
best year, best future...**

Student Welfare

The Academy is committed to providing a supportive and caring learning environment that fosters academic success, where sixth form students can enjoy their time and study.

We have a team of professional staff dedicated to assisting with student welfare matters.

The Academy Day	08:30 - Form Time/Assembly	12:20 - Lunchtime
	09:00 - Lesson 1	13:10 - Lesson 4
	10:00 - Breaktime	14:10 - Lesson 5
	10:20 - Lesson 2	15:10 - End of Day
	11:20 - Lesson 3	

Sixth Form Leadership Team



Jess Capstick
Senior Vice Principal



Amrita Bains
Head of Sixth Form



Lashanna Hamilton
Head of Year 13



Filippo Romano
Head of Year 12



Emma Brady
Deputy Head of Sixth

Sixth Form Work Experience and Careers Guidance Partners



ACCESS ASPIRATION
LINKING YOUNG PEOPLE AND BUSINESS

We are partnered with Access Aspiration, a Mayor's Fund for London programme, to provide our sixth form students with a comprehensive work experience programme throughout their two years with us.

As part of this partnership, all sixth form students receive a compulsory programme of in-school work related learning support:

- Access Aspiration introduction assembly, in which the programme is introduced, and students given access to their own Access Aspiration personal account.
- Exposure to numerous industry speakers giving insight into their career options and career paths available.
- A mock interview day with advice and guidance from industry professionals.
- An employability workshop giving students the tools needed to successfully navigate applying for jobs.
- A speed networking day with industry professionals from a variety of industries and professions including leading multinational and national companies.
- Experience placements with Access Aspiration partners across the course of their two-year sixth form.



All students will also receive a Morrisby account login-for-life. Morrisby is a website which provides students with careers guidance, options at 18 and planning tools to support their career progression throughout their adult life.

Alongside the advice and guidance provided by staff at the Academy students can use this tool to help understand themselves better and create a step-by-step career plan to help achieve their ambitions.



We have invested in Unifrog which is a complete destinations platform. Unifrog helps students compare every opportunity, then apply successfully. The university apprenticeship research tool helps students to make the best choices and submit the strongest applications, while the Know-How library offers advice and guidance on all aspects of careers and progression into higher education or work. It empowers students through the 'Activities' record where they can keep a log of all extra and super curricular activities; this helps them highlight their competencies with a focus on the 12 most in demand competencies by employers and educators.

It also empowers teachers and counsellors to manage the progression process effectively, as it can be used as a tool for progress and discussion with students, tutors and teachers in 121 sessions.

Admission Criteria

Minimum Academic Entry

5 GCSEs at 5+ Grades (including English and Maths), in addition, you must also meet the subject entry requirements listed below.

Subject	Subject GCSE Entry Requirements
Art & Design A Level	Grade 6 in Art, Photography, Three-Dimensional Design, Product Design, Design Technology
Biology A Level	6 in Biology or 7-7 in Combined Science & 6 in Maths
Business A Level	6 in English & Maths
BTEC Business (Triple)	5 in English, Maths & Business or Merit in BTEC L2 Business
Chemistry A Level	6 in Chemistry or 7-7 in Combined Science & 6 in Maths
Computer Science A Level	6 in Computing & Maths
Economics A Level	6 in English & Maths
English A Level	6 in English Language & Literature
French A Level	6 in French
Further Maths A Level	7 in Maths (must be picked with Maths A Level)
Maths A Level	7 in Maths
Media Studies A Level	6 in English Language and Literature
Geography A Level	6 in Geography
Government & Politics A Level	6 or above in a Humanities subject & 6 in English Language
History A Level	6 in History or Geography & English Language
Physics A Level	6 in Physics or 7-7 in Combined Science & 7 in Maths
Psychology A Level	6 in Psychology or 6 in Maths & English Language
Religion, Philosophy & Ethics A Level	6 in Religious Education or a Humanities subject & 6 in English Language
Sociology A Level	6 in English Language and Literature
Spanish A Level	6 in Spanish

**All subjects are listed based on availability at the time of printing and are subject to change. Each class has a maximum capacity of 30 students and a minimum of 10. Please note, Business BTEC is a Level 3 triple qualification therefore it fills three option block subject choices.*





Advanced Level Program

(A Level)

The advanced level programmes are 2-year linear courses assessed via examinations or a combination of examinations and non-examined assessments (NEA), depending upon the specific subject.

Vocational Programmes

(BTEC)

Vocational programmes are assessed via external examinations and internal assessments across the two years.

Both advanced level and vocational programmes will allow students to progress into undergraduate courses or apprenticeship schemes. However, numerous university and apprenticeship courses may require specific qualifications.

Tutoring and mentoring

Sixth Form marks a key transition for young people and brings with it changed status and acknowledgment that each student is now a young adult within our Academy and the wider community. At the Academy, each student benefits from one-to-one guidance and support from the individual tutor.

Every student is provided with a diary which helps them to be organised and helps with communication between home and the Academy. Students and parents can also log onto Google Classroom which is the technology used as a teaching and communication tool by subject teachers.

A student who needs extra support will have access to mentoring and we have excellent links to multi agencies what where required.



Emma Skae, Principal at Walthamstow Academy, said: *"Our Sixth Formers have shown real determination and resilience over the past two years to achieve the outcomes they have. Thanks to their hard work as well as the enduring support of our Sixth Form team, our students are now going on to study an impressive range of courses at some of the country's top universities. As a school, we strive to make sure all our students not only set high ambitions for themselves but are able to achieve them. It is therefore excellent to see so many of our students securing their first-choice destinations."*

Deyna Mesuria achieved A*A*A in Biology, Chemistry and Maths and is going to study Physiological Science at Bristol University.

Deyna said, *'I chose to study Physiological Science because it could potentially lead me to Sports Science.'*

David Pupla achieved A*, A*, A* in Computing, Maths and Physics and he is going to study Computer Science at Manchester University.

David said, *'My main piece of advice is to keep working hard and stay passionate about your A Levels. The more passion you have, the easier you'll find it. Determination is key.'*

Jenai Allen achieved A, A, A in Chemistry, Maths and Physics and is going to study Aerospace Engineering at Southampton.

Jenai said, *'Thanks to my teachers, I was able to obtain great results but in order to achieve your best, you have to put the work in at home as well. I'm pleased to say I'm now going to study aerospace engineering at the University of Southampton.'*

Ylli Haliti achieved A*, A*, A in Chemistry, Maths and Physics. He is going to Imperial College to study Chemistry with Molecular Physics

Ylli said, *'I am more than pleased that my perseverance and hard work have paid off. Just remember anyone can achieve their dreams when they follow the words, 'success is not final, failure is not fatal: it is the courage to continue that counts'*

Redly Mireku-Boateng achieved A*, A, A, A in Business, Economics, Geography and Government & Politics and is going to Kings to study Law

Redly said, *'Don't stop when you're tired, stop when you are done'. This is a quote that has stuck with me throughout this A-level experience; I believe that hard work coupled with a desire to improve beats talent any day of the week. I'd like to thank the school and my teachers for providing me with the opportunities to succeed, and for giving me the resources to flourish'.*





Expectations of Sixth Form Students

A Walthamstow Academy Sixth Form student always:

- Immerses themselves within their academic studies by working hard in class, acting upon expert feedback from their teachers, completing homework and independent study tasks and reading wider academic literature to expand their knowledge.
- Role models for students across the school by being working hard for their goals and aspirations while being respectful and courteous to all.
- Presents themselves immaculately and is punctual to the Academy and lessons.
- Attends school every day ready to learn.

Dress Code

- Sixth Form students are no longer required to wear the Walthamstow Academy school uniform, but they are expected to dress in business wear, this includes a blazer for all students.

- Students must also wear their ID card and Sixth Form lanyard at all times to conform to Health and Safety policies.

- Clothing considered business wear includes suits, blazers, smart trousers/skirts, shirts/blouses, turtleneck's, ties, smart dresses and leather style shoes. Please do not wear jeans, leggings, trainers, hoodies, sweatshirts, polo shirts or sports/casual wear.

Our business wear policy is designed to help students feel professional while in a high-level educational environment and encourage them to be the best version of themselves. It also helps to prepare students for the adult world by making them comfortable in business settings as well as ensuring they feel confident walking into interviews and professional settings representing the best version of themselves.



Spectacular Facilities

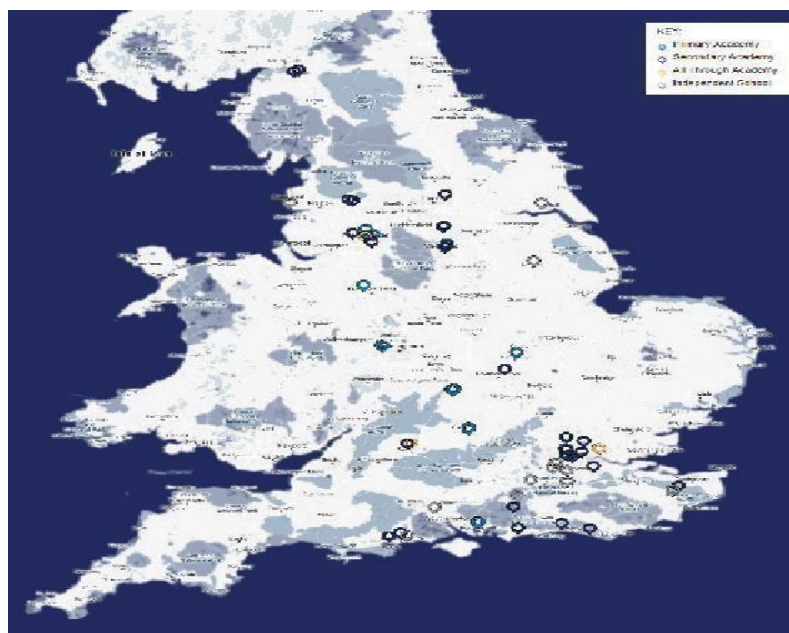
Walthamstow Academy offers students and staff state-of-the-art facilities and cutting-edge equipment across all learning areas providing students with a spectacular 21st Century learning environment. The facilities include:

- Over seventy light and airy classrooms, each with interactivewhiteboards and internet access
- Ten fully equipped, custom-designed science laboratories
- Nine innovatively designed ICT suites including two Macsuites for media and music
- A library packed full of books and computers
- A large modern sports hall
- A fitness suite and dance studio
- Two all-weather sports courts
- A sports field with football pitches and an athletics track
- Outdoor multi gym
- A giant open plan art studio
- A spacious assembly hall
- Two fully equipped music suites with recording studios
- Technology workshop
- Media suite with film studio
- Dedicated Sixth Form independent study spaces and common room
- A modern dining hall, offering a wide range of healthyfood options
- Covered outdoor dining area
- A locker for every student
- Chromebook for all students
- Free textbooks and revision guides



Our Schools

Walthamstow Academy is part of United Learning – a group of schools which aims to provide excellent education to children and young people across the country.



Abbey Hey Primary Academy Accrington Academy AKS Lytham Ashford School Avonbourne Boys' Academy Avonbourne Girls' Academy Avonwood Primary School Bacons College Banstead Preparatory School Barnsley Academy Beacon View Primary Academy Brentnall Academy Cambridge Academy for Science and Technology Castle View Academy Coleridge Community College Corngreaves Academy Coworth Flexlands Cravenwood Primary Academy Dukesgate Academy Dunottar School Embley Ernest Bevin Academy Fulham Primary School Glenmoor and Winton Academies Newstead Wood School Goresbrook School Grange Primary Academy Guildford High School Ham Dingle Primary School Hanwell Fields Community School High Hazels Academy	Hill View Primary School Hull Collegiate School Hunningley Primary School Irlam and Cadishead Academy Kettering Buccleuch Academy Langford Primary Lincoln Minster School Longshaw Primary Academy Manchester Academy Marlborough Road Academy Marsden Heights Community College Midhurst Rother College NOA's Ark Nursery North Oxfordshire Academy Northampton Academy Nova Hreod Academy Orchard Meadow Primary School Paddington Academy Parkside Community College Pegasus Primary School Richard Rose Central Academy Richard Rose Morton Academy Rowan Preparatory School Salford City Academy Southway Primary School St Ives School Salisbury Manor Primary School Seahaven Academy Sedgehill Academy	Sheffield Park Academy Sheffield Springs Academy Shoreham Academy Silverdale Primary Academy Stockport Academy Sullivan Primary School Surbiton High School Swindon Academy The Albion Academy The Cornerstone Academy The Elms Academy The Galfrid Academy The Hurlingham Academy The Hyndburn Academy The John Roan School The Lowry Academy The Regis School The Totteridge Academy The Victory Primary School Timbertree Academy Trumpington Community College Walthamstow Academy Walthamstow Primary Academy Whittingham Primary Academy Wilberforce Primary William Hulme's Grammar School Windale Primary School Winston Way Primary Academy Worsbrough Bank End Primary School Wye School
---	--	---



Application and Admissions Procedures

All candidates will need to meet the minimum academic entry criteria of a minimum of five grade 5+ GCSEs, including English and Maths.

Walthamstow Academy Year 11 Applicants

Current Walthamstow Academy Year 11 students will be able to log in to walthamstow.applicaa.com and select the courses they would like to study at Sixth Form.

Remember you can speak to the sixth form team or sixth form teachers to get more information on the subjects you are considering.

External Year 11 Applicants

We welcome applications from all external candidates to study at our sixth form. Once candidates have submitted their online application form at walthamstow.applicaa.com they will be contacted to attend an interview which provides an opportunity to find out what their future at the Academy will look like.

External applicants must complete and return the online application form as well as a reference from their current school which includes their predicted grades. This must be submitted by the application deadline for consideration.

Important Diary Dates

Online Sixth Form Applications
Sixth Form Open Evening
Sixth Form Applications Deadline
Sixth Form in Action Morning
Sixth Form Enrollment Day/GCSE Results day

Open from Monday 6 October 2025
Thursday 14 January 2026 (5-6:45pm)
Friday 30 January 2026
Available to book online
Thursday 20 August 2026

...best lesson, best day, best year, best future...



Walthamstow Academy
The best in everyone™
Part of United Learning

**For further information, please contact our
Admissions Officer at:**

Walthamstow Academy
Billet Road
Walthamstow
London
E17 5DP

Telephone: 020 8527 3750

Email: info@walthamstow-academy.org

Website: www.walthamstow-academy.org

Walthamstow Academy / UL policies include those on admissions, anti-bullying, behaviour (rewards and sanctions), charging and remissions, child protection, complaints, education, ethos, health and safety, rights of withdrawal from religious education and worship and special educational needs are available on request.



Subject Information Pages





Art, Craft and Design A Level

Exam Board: AQA

Entry Requirements: GCSE Grade 6 in any of the following Art, Photography, Three-Dimensional Design, Product Design, Design Technology

Subject Content

Projects Studied in Year 12 & 13:

In Year 12, students have an introduction to foundation skills, key processes and techniques before moving onto longer projects (personal investigations) set in conjunction with staff and students according to students' personal interests.

Year 12 foundation units include:

- Recording visual information. We look at the range of different visual information that can be recorded and different approaches and techniques we can use to record them.
- What if? A unit designed to expand students' awareness of creative opportunities and to gain skills in new processes, material and techniques to maximise their creative potential.
- My eyes: my art. Students are challenged to explore and identify their personal creative preferences, finding their creative voice.

In the February of Year 13, AQA, our exam board shares the externally set project options, usually seven different exam topic options, concluding with a 15-hour practical exam in April.

During the course, students are required to work in two or more of the areas below:

- Fine Art – areas of study such as painting, printmaking or sculpture.
- Graphic Communication – areas of study such as illustration, packaging, or advertising.
- Photography – areas of study such as traditional, digital, or moving image.
- Three-dimensional design – areas of study such as ceramics, design for theatre, product design, architectural design and interior design.
- Textile Design – Areas of study such as printed and digital textiles, fashion design, or constructed textiles.

Assessments

All units are assessed against AQA grading criteria. Students are assessed in four areas:

- The development and refinement of ideas through investigation
- Development and refinement of ideas through experimentation
- Recording insights and observations
- To create a personal and meaningful response

The A Level grade mark is weighted on 60% personal investigation (coursework) which includes a 1000–3000-word essay, and 40% exam project (externally set task). There is no written exam.

Skills gained and enrichment opportunities:

This course provides skills and training across the realm of Art, Craft & Design. Students develop critical and analytical thinking alongside creativity, oral and visual presentation skills. We aim to foster independent enquiry, time management and resilience. We encourage students' experience of the artwork through galleries and museum visits.

Progression/Career opportunities:

An A Level in Art, Craft and Design opens the doors to many courses and career options. Students go on to specialize or work in graphic design, illustration, fine art, photography, textile design, fashion design, animation, three-dimensional interior design, and architecture to name a few.

Further information:

Ms R Knowles – Head of Art

Rosie.Knowles@walthamstow-academy.org



Biology A Level

Exam Board: AQA

Entry Requirements: Students require a GCSE Grade 6 in GCSE Biology or Grade 7-7 in Combined Science. Students also require at least a grade 6 in GCSE Mathematics.

Subject Content

Year 1

- Biological molecules
- Cells
- Organisms exchange substances with their environment
- Genetic information, variation and relationships between organisms

Year 2

- Energy transfers in and between organisms
- Organisms respond to changes in their internal and external environment
- Genetics, populations, evolution and ecosystems
- The control of gene expression

Skills gained and enrichment opportunities:

The subject content is relevant to real work experiences and is fascinating to learn, giving students freedom to explore around topics. The specification allows students to be inspired and to nurture their passion for biology, laying the groundwork for further studies in courses like medicine and biological sciences. Practical skills are embedded into the teaching to give students every opportunity to develop their independence and scientific skills to further support their development.

Assessments

Paper 1

- Any content from topics 1 to 4 including relevant practical skills.
- 2 hours written exam paper worth 35% of A-Level.
Out of 91 marks:
- 76 marks: Mixture of short and long answer questions.
- 15 marks: Extended response questions.

Paper 2

- Any content from topics 5 to 8, including relevant practical skills.
- 2 hours written exam paper worth 35% of A-level.
Out of 91 marks –
- 76 marks: Mixture of short and long answer questions.
- 15 marks: Comprehension questions

Paper 3

- Any content from topics 1 to 8, including relevant practical skills.
- 2 hours written exam paper worth 30% of A-level.
Out of 78 marks –
- 38 marks: Structured questions including practical techniques.
- 15 marks : Critical analysis of given experimental data
- 25 marks : One essay from a choice of two titles.

Progression/career opportunities:

Completing a course in Biology opens up many university and career prospects. These range from courses within the medical field such as pharmacy, physiotherapy, optometry, as well as more general degrees in Biology and Chemistry. Also, Biology contributes to degrees and careers in Zoology (study of animals), veterinarian studies (working with animals, botany and more.

Further information:

Ms C Sinanan – Head of Biology

Charlotte.Sinanan@walthamstow-academy.org

Mr S Kelly - Head of Science

Sam.Kelly@walthamstow-academy.org



Business A Level

Exam Board: Edexcel

Entry Requirements: GCSE Grade 6 in English and Maths

Subject Content

Units studied in Year 12:

Theme 1: Marketing and people.

This theme enables student to understand how businesses identify opportunities and develop a competitive advantage. Students develop an understanding of how businesses adapt their marketing to operate in a dynamic business environment. This theme also considers people, exploring how businesses recruit, train, organize and motivate employees, as well as the role of enterprising individuals and leaders.

Theme 2: Managing business activities.

This theme enables students to develop an understanding of raising and managing finance and measuring business performance. The theme outlines the importance of using resources efficiently within a business to ensure that good or services can be delivered effectively and efficiently, and to a high quality. Students also consider the external influences that have an impact on businesses.

Units studied in Year 13:

Theme 3: Business decisions and strategy.

This theme moves from functions to strategy, enabling students to develop their understanding of the core concepts and to take a strategic view of business opportunities and issues. Students analyse corporate objectives and strategy against financial and non-financial performance measures. The theme covers the causes and effects of change and how businesses mitigate risk and uncertainty.

Theme 4: Global Business.

Students investigate businesses that trade on a global scale and explore their reasons for doing so. Students develop an understanding of the globally competitive environment and consider the ethical and moral dimensions of global business activities.

Assessments

Year 12:

N/A

Year 13:

Three two-hour A level examinations.

Papers 1 & 2, each contributing 35% of the total qualification, and Paper 3 contributing 30%.



Progression/career opportunities:

Studying A-level Business can be a steppingstone to a wide range of popular undergraduate courses at university including: Accounting and Finance, Business Management or Marketing. Career opportunities are endless but often including banking, insurance, retail management, business development and marketing.

Skills gained and enrichment opportunities:

Students on this course will develop a wide range of skills that will improve their future employability. They will be able to generate enterprising and creative approaches to business opportunities, problems and issues. Approximately 10% of the overall marks in this qualification will test students' quantitative skills

Further information:

Mr. T Ogbe – Head of Business

Tunokan.Ogbe@walthamstow-academy.org



BTEC Level 3 National Extended Diploma in Business

Exam Board: Edexcel

Entry Requirements: GCSE Grade 5 in Maths and English. GCSE Business or BTEC Level 2 Merit in Business (if studied) Diploma (Double award) or Extended Diploma (Triple award)

Subject Content

Units Studied in Year 12:

Unit 1 Exploring Business
Unit 2 Developing a Marketing Campaign
Unit 3 Personal and Business Finance
Unit 4 Managing an Event
Unit 5 International Business
Unit 6 Principles of Management
Unit 7 Business Decision Making

Units Studied in Year 13

Unit 8 Recruitment and Selection Process
Unit 14 Investigating Customer Service
Unit 16 Visual Merchandising
Unit 19 Pitching for a New Business
Unit 21 Training and Development
Unit 22 Market Research



Skills gained and enrichment opportunities:

Students undertaking this course will develop an excellent range of skills. These include developing management, investigative, group work and presentation skills. Students also improve their independent learning skills as they develop their personal portfolios of work. The course involves real life businesses and, as well as visits to these companies, outside speakers will be invited to the Academy. Students also undertake a work experience placement.

Assessments

Year 12 and 13:

The course is both internally and externally assessed. 9 Units are internally assessed through coursework 3 Units are externally assessed through controlled Assessments on a pre-released case study.

1 Unit is externally assessed through a 2-hour written exam.

For the triple award the grades are the equivalent of three A Level grades in terms of UCAS points (i.e. Distinction*/Distinction*/Distinction = 160 UCAS points, which is the same as 2 A*s and an A at A Level).

Assessment – Diploma (Double award) 6 mandatory units and 2 optional units. Extended Diploma (Triple award) 7 mandatory units and 6 optional units.

Progression/career opportunities:

Business is a completely work-related subject and as a result students have an extremely wide-ranging career choice. Students could manage/work in any organization from advertising agencies to construction companies. The subjects covered are also suitable for careers in law, accountancy and many management positions. Business is also a very popular university subject. This course can lead to starting a degree in many aspects of business including European business, business and the environment, finance, management and many other specialist degrees.

Further information:

Mr. T Ogbe – Head of Business

Tunokan.Ogbe@walthamstow-academy.org



Chemistry A Level

Exam Board: AQA

Entry Requirements: Students require a Grade 6 in GCSE Chemistry or Grade 7-7 in Combined Science.

Subject Content

There are 3 topics in Chemistry that will cover knowledge, understanding, mathematical and practical skills.

1. Physical Chemistry
2. Inorganic Chemistry
3. Organic Chemistry



Skills gained and enrichment opportunities:

Chemistry is fundamentally an experiment subject. The specification provides numerous opportunities to use practical experiences to link theory to reality and equip students with the essential practical skills they need, allowing students to scope real life applications in our world. Chemistry is an excellent steppingstone to future studies, ensuring that students can develop their scientific skills and lay the foundations in courses such as medicine and pharmacy.

Assessments

Paper 1: Physical and Inorganic Chemistry (35%)

Includes topics: atomic structure, amount of substance, thermodynamics, electrochemical cells, acids and bases, periodicity, group 2 + 7, transition metals. Including relevant practical skills.

2 hours written exam paper, out of 105 marks

Paper 2: Physical and Organic Chemistry (35%)

Includes topics: bonding, equilibria, energetics, amount of substance, alkanes, alcohols, organic analysis, isomerism, aromatics, carbonyl compounds, polymers, DNA and amines. Including relevant practical skills.

2 hours written exam paper, out of 105 marks

Paper 3: A-Level Chemistry (30%)

Includes any content from the course and assess any practical skills from the 12 CPACs completed throughout the course.

2 hours written exam paper, out of 90 marks.

Progression/career opportunities:

Chemistry is required to study the following courses in higher education: medicine, dentistry, pharmacy and veterinary science. Other career opportunities include research and development, chemical engineering, biochemistry and other scientific-related subjects. Chemistry is highly in demand by universities and employers as it exhibits high levels of logic and analytical skills, hence many people go into banking or finance with their Chemistry qualifications.

Further information:

Ms H Alam – Head of Chemistry

Halima.Alam@walthamstow-academy.org

Mr S Kelly - Head of Science

Sam.Kelly@walthamstow-academy.org



Computer Science A Level

Exam Board: OCR

Entry Requirements: GCSE Grade 6 in Computer Science. GCSE Grade 6 in Maths

Subject Content

Component 1 : Computer Systems

Students are introduced to the internal workings of the (CPU), data exchange, software development, data types and legal and ethical issues. The resulting knowledge and understanding will underpin their work in component 03.

It covers:

- The characteristics of contemporary processors, input, output and storage devices
- Types of software and different methodologies used to develop software
- Data exchange between different systems
- Data types, data structures and algorithms
- Legal, moral, cultural and ethical issues.

Component 2 : Algorithms and Programming

This builds on component 1 to include computational thinking and problem-solving.

It covers:

- What is meant by computational thinking (thinking abstractly, thinking ahead, thinking procedurally etc.)
- Problem solving and programming – how computers and programs can be used to solve problems
- Algorithms and how they can be used to describe and solve problems.

Component 03: Programming Project

Students are expected to apply the principles of computational thinking to a practical coding programming project. They will analyse, design, develop, test, evaluate and document a program written in a suitable programming language. The project is designed to be independently chosen by the student and provides them with the flexibility to investigate projects within the diverse field of computer science. We support a wide and diverse range of languages.

Assessments

Paper 1 :

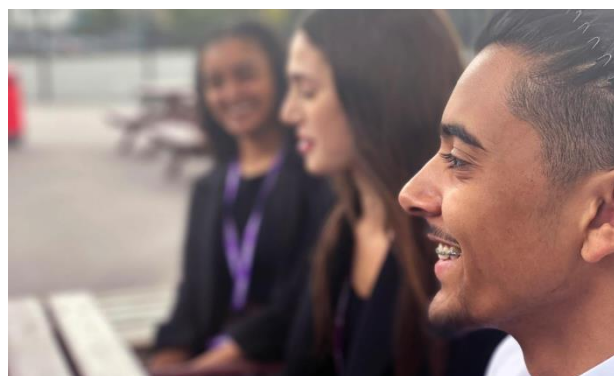
Computer Systems – written paper (40% of final grade)

Paper 2:

Algorithms and programming – written paper (40% of final grade)

Programming Project:

Non-examined assessment (20% of final grade)



Skills gained and enrichment opportunities:

The capacity to think creatively, innovatively, analytically, logically and critically. The ability to apply skills, knowledge and understanding of computing, including programming in a range of contexts to solve problems. An understanding of the consequences of using computers, an awareness of emerging technologies and an appreciation of their potential.

Progression/career opportunities:

It is excellent preparation for students looking to take computing studies at degree level, or for anyone considering any kind of career in computing.

Further information:

Mr W Asghar – Head of Computing

Waqas.Asghar@walthamstow-academy.org



Economics A Level

Exam Board: AQA

Entry Requirements: GCSE Grade 6 in English and Maths

Units Studied in Year 12

Unit 1: The operation of markets and market failure

Including the economic problem and economic methodology, price determination in a competitive market, determinants of the demand for goods and services, price and income elasticities of demand, production costs and revenues, supply, specialisation, division of labor, economies of scale, meaning of market failure, public goods, positive and negative externalities, competitive and concentrated markets and market mechanism, market failure and methods of government interventions.

Unit 2: The national economy in a global context

Including the measurement of macroeconomic performance, macroeconomic indicator, how macroeconomy works, circular flow of income, AD/AS analysis and related concepts, economic performance, growth, inflation, employment and unemployment, balance of payments, macroeconomic policies:
Fiscal, monetary and supply-side policies.

Units studied in Year 13

Unit 3: Individuals, firms, markets and market failure

Economic problem and economic methodology, individual economic decision making, price determination in a competitive market, behavioral economics, production costs and revenue, perfect competition, imperfectly competitive markets and monopoly, labor market, the distribution of income and wealth: poverty and inequality and market mechanism, market failure and government interventions in markets.

Unit 4 : The national international economy

Measurement of macroeconomic performance, how the macroeconomy works, the circular flow of income, AD/AS analysis and related concepts, economic performance, financial markets and monetary policy, fiscal and supply side policies, international economy and behavioral economics.

Assessments

Three 2-hour examinations. Each examination contributes to 33% of the A Level. Throughout the course a variety of assessment techniques will be used: supported multiple-choice questions, data response questions and essay questions to assess progress.

Skills gained and enrichment opportunities:

Students following this course will have opportunities to develop and generate evidence of attainment in key skills of communication, application of numeracy, information technology, working with others, improving own learning and performance as well as having opportunities to take part in discussions and attend conferences, university lectures and business forums.

Progression/career opportunities:

A Level economics will open many opportunities to study for prestigious degrees at university such as economics, development economic, banking and finance, history, anthropology and law. Other career opportunities include potential employment prospects in research and development, government, journalism, finance, investment banking or insurance.

Further information:

Mr R Shams – Teacher of Economics

Raiyan.Shams@walthamstow-academy.org



English Literature A Level

Exam Board: OCR

Entry Requirements: GCSE Grade 6 in English Literature and Language

Units Studied in Year 12

Component 3: Coursework – Modern and Contemporary Fiction

For their coursework unit students are required to independently produce two tasks. Task one is a detailed close analysis of a short section of poetry (up to 45 lines) from a small selection of poems by a contemporary poet. Task two is an independently researched critical comparison of two thematically linked contemporary texts, one prose, one drama. In preparation for this unit, students are given detailed instruction on how to improve the quality of their own writing to A Level standard.

Component 2: Chosen Topic Area (Year 12 & 13)

Students will study least two texts, one set text and one free choice text, from a chosen topic area, including American Literature, Dystopian Fiction and Women in Literature. This unit will be assessed in a two-part closed text written examination. Part one will test analysis skills on a short unseen passage from their chosen topic area, whilst part two will involve a comparative and contextual study of both texts informed by different critical interpretations. The majority of texts in this component are 20th Century.

Units Studied in Year 13

Component 1: Section A – Shakespeare

Students will study a single Shakespeare text in detail exploring a range of different interpretations, analysing the ways in which language shapes meaning and articulating their own personal and creative responses. This unit will be assessed in a closed text written examination.

Component 1: Section B – Drama & Poetry pre-1900

In this comparative study, students will explore connections between chosen set texts from the genres of drama and poetry written before 1900, as well as demonstrating their appreciation of the significance of cultural and contextual influences. This unit will be assessed in a closed text written examination.

Assessments

Component 1: Two-and-a-half-hour exam
40% of A Level - Assessed at the end of Year 13

Component 2: Two-and-a-half-hour exam
40% of A Level - Assessed at the end of Year 13

Component 3: Non – examined Assessment
20% of A Level – Submitted for moderation in Year 13

Skills gained and enrichment opportunities:

This course develops an interest in English Literature. You will be encouraged to read widely, critically and independently, across literary movements, genres and form, alongside developing detail analytical, discursive and evaluative transferable skills. The focus of the course is on Modern Literature, with most texts studied written after 1950 and includes scope for students to independently choose and research texts for individual study.

Progression / career opportunities:

The rigorously analytical and academic nature of this course, together with its strong focus on independent research skills, provides a solid foundation for careers in law, media and journalism, whilst also being a well-respected route into a whole range of consultancy-based careers, including politics, the civil service and medicine.

Further information:

Ms E Kreamer – Head of English

Emma.Kreamer@walthamstow-academy.org

Mr Bell-Brown – KS5 English Lead

Stephen.Bell-Brown@walthamstow-academy.org



French A Level

Exam Board: OCR

Entry Requirements: GCSE Grade 6 in English Literature and Language

Units Studied in Year 12

AS & A Level Compulsory Topics

1. Aspects of French-speaking society:
Current trends
The changing nature of family The “cyber-society”
The place of voluntary work
2. Artistic culture in the French-speaking world: A culture proud of its heritage
Contemporary francophone music Cinem :
The 7th art form

Units Studied in Year 13

A Level Only

1. Aspects of French-speaking society:
Current issues
Positive features of a diverse society Life for the marginalised
How criminals are treated
2. Aspects of political life in the French-speaking world:
Teenagers, the right to vote and political commitment Demonstrations, strikes- who holds power?
Politics and immigration
3. Optional content:
Students study two books or one book and film from the lists in the specification.

Individual Research Topic

Students conduct individual research on a subject of personal interest, relating to the country where the language of study is spoken.

Assessments

Listening, Reading and Writing: 2 hours 30 minutes 100 marks

50% of A-level - Assessed at the end of Year 13

Written exam: 2 hours

80 marks in total 20% of A-level - Assessed at the end of Year 13

Oral exam: 21–23 minutes (including 5 minutes preparation time) 60 marks in total 30% of A-level – Submitted for moderation in Year 13

Skills gained and enrichment opportunities:

Studying this course will enable students to develop highly effective communication, public speaking and translation skills, preparing them for the world of work.

Progression / career opportunities:

This course will enable students to progress on to higher education courses at university in a variety of subjects and would enable students to become translators, teachers, lawyers amongst other professions.

Further information:

Ms D Mash- Head of Modern Foreign Languages

Daisy.Mash@walthamstow-academy.org



Geography A Level

Exam Board: AQA

Entry Requirements: GCSE Grade 6 in Geography. All entry requirements are excluding coursework components.

Subject Content

Physical Geography

- Water and carbon cycle
- Coastal processes
- Hazards

Human Geography

- Global systems and global governance
- Changing places
- Population and the Environment
- Geography Fieldwork Investigation (coursework)

Progression / career opportunities:

Geography is a broad-based academic subject which will [open up](#) options for you in your future which could include the following:

- | | |
|---|--|
| • Climate change assessment & planning | • International development & aid |
| • Climatology & meteorology | • Local & regional development |
| • Community development | • Mapping & Cartography |
| • Conservation, heritage & land management | • Market research |
| • Consulting & project management | • Natural resource management & agriculture |
| • Education | • Planning (urban, regional, environmental, social & transport planning) |
| • Environmental & social impact assessment | • Public policy |
| • Environmental monitoring & management | • Public safety, defense & national security |
| • Environmental science | • Real estate & land development |
| • Geographic Information Systems (GIS) | • Remote sensing |
| • Hazard assessment, mitigation & disaster management | • Research |
| | • Social services & welfare |
| | • Sustainability |
| | • Tourism management |

Assessments

Paper 1

Any content from topics 1 to 3
2 hours and 30 minutes written exam paper worth 120 marks 40% of A-level.

Paper 2

Any content from topics 4 to 6
2 hours and 30 minutes written exam paper worth 120 marks for 40% of A level.

Geography Fieldwork Investigation

Students complete an individual investigation which must include data collected in the field. The individual investigation must be based on a question or issue defined and developed by the student relating to any part of the specification content.
3,000 – 4,000-word essay worth 60 marks for 20% of A Level, marked by teachers and moderated by AQA.

Skills gained and enrichment opportunities:

Geography is a broad-based academic subject which will open options for you in your future. Employers and universities see geography as a robust academic subject rich in skills, knowledge and understanding. As a subject linking the arts and the sciences it is highly flexible in terms of what you can combine it with, both at GCSE and A Level. If you choose to take geography onto university, there are literally hundreds of courses to choose from and the range of career areas accessed by graduate of geography will probably surprise you. Students will go on four fieldwork trips to support their studies. (Stratford, Brick Lane, Epping Forest) According to the latest information from the Higher Education Careers Services Unit, only 5.8% of geography graduates were still job-hunting six months after they graduated, against an average of 7.3% of graduates with other degrees.

Further information:

Ms A Bearman – Head of Geography

Alice.Bearman@walthamstow-academy.org



Government and Politics A Level

Exam Board: Edexcel

Entry Requirements: Grade 6 or above in a Humanities subject & 6 in English Language

Subject Content

Component 1: UK Politics
Component 2: UK Government
Component 3: Comparative Politics

Component 1: UK Politics:

Content overview

1. Political Participation, students will study:
Democracy and participation, political parties, electoral systems, voting behavior and the media.
2. Core political ideas, students will study:
Conservatism, liberalism, socialism.

Component 2: UK Government:

1. UK Government, students will study:
The constitution, parliament, Prime Minister and executive, relationships between the branches.
2. Non-core political ideas, students will study:
One idea from the following: anarchism, ecology, feminism, multiculturalism, nationalism.

Component 3: Comparative Politics:

For USA (3A), students will study:

The US constitution and federalism, US Congress, US presidency, US Supreme Court and civil rights, democracy and participation, comparative theories.

OR

For Global (3B) students will study:

Sovereignty and globalisation, global governance: political and economic, global governance.

Assessments

Component 1: UK Politics:

Written examination: 2 hours
33.33% of the qualification. 84 marks

Component 2: UK Government:

Written examination: 2 hours
33.33% of the qualification. 84 marks

Component 3: Comparative Politics:

Written examination: 2 hours
33.33% of the qualification. 84 marks

Student study either USA Politics or Global Politics

Skills gained and enrichment opportunities:

Students will have the opportunity to visit Parliament, attend conferences and meet with political figures and journalists.

Students can progress from this qualification to:

- University courses that relate directly to government and politics
- University courses that will benefit from the skills acquired from this GCE, for example Law, Economics, Philosophy

Progression/career opportunities:

Employment where analytical skills are essential, for example management, finance, government, industry and business environments.

Further information:

Mr V Pandya – Head of History

Vimal.Pandya@walthamstow-academy.org

History A Level



Exam Board: Edexcel

Entry Requirements: GCSE Grade 6 in History or Geography and English

Subject Content

Democracies in Charge: Britain and the USA in the 20th Century

Paper 1: Britain transformed, 1918 – 79

Paper 2: The USA, 1955-92: Conformity & Challenge

Paper 3: Protest, agitation and Parliamentary reform in Britain, 1780 – 1928

Coursework: Enquiry on historical interpretations: The origins of WW1 (3,000 – 4,000-word essay)

Paper 1: Breadth study with interpretations (30% A level/ 60% AS)

This option comprises a study, in which students will learn about the extent to which Britain was transformed politically, socially, economically and culturally in the years 1918-79. They will consider responses to the challenges of war, fluctuations in the economy, technological advancement and the desire for greater social equality.

Paper 2: Depth study (20% A Level | 40% AS)

This option comprises a study of the USA in the years 1955-92, from post-1945 affluence, through racial and political protests in the 1960's, to the rise of right-wing groups in the 1980's and the development of bitter divisions between Democrats and Republicans.

Paper 3: Themes in breadth with aspects in depth (30% A Level). This option comprises two parts: the aspects in breadth focus on long term changes and contextualise the aspects in depth, which focus on detail in key episodes. Together, the breadth and depth topics explore the relationship between authority and mass mitigation in England, the struggle for greater representation in England, and the ways in which the interests and concerns of individuals in society could make themselves known.

Coursework (20% A Level):

The purpose of this coursework is to enable students to develop skills in the analysis and evaluation of interpretations of history in a chosen question as part of an independently researched assignment. The focus is on understanding the nature and purpose of the work of the historian. Students will be specifically required to analyse, explain and evaluate the interpretations of these historians.

Paper 1: Breadth study with interpretations
30% A Level | 60% AS 2 hours 15 minutes:

Section A: One breadth essay

Section B: One breadth essay

Section C: One interpretation question

Paper 2: Depth study 20% A Level | 40% AS 1 hour 30 minutes.

Section A: One source question

Section B: One depth essay

Paper 3: Themes in breadth with aspects in depth
30% A Level 2 hours 15 minutes

Section A: One source question

Section B: One depth essay

Section C: One breadth essay

Coursework 20% A Level: 3000 – 4000-word essay

Skills gained and enrichment opportunities:

Students can progress from this qualification to higher education courses, such as degrees in history or in related subjects such as politics, English Literature, Law, Philosophy, Economics, or Geography. Past students have taken degree courses at the LSE, Exeter University and SOAS, University of London.

Progression/career opportunities:

A wide range of careers in areas such as journalism and media, education, libraries, national and local government and civil service.

Further information:

Mr V Pandya – Head of History

Vimal.Pandya@walthamstow-academy.org



Exam Board: Edexcel

Entry Requirements: GCSE Grade 7 in Maths

Course Summary

The course encourages you to develop your thinking and problem-solving skills, look for connections between ideas and get to grips with some quite abstract concepts. In many ways Mathematics can be thought of as a life skill. By the end of the first year, you will have used Calculus, the mathematics that Newton and Leibniz used to describe the motion of the planets and the world around us.

A Level maths is an academic course that demands a lot of hard work. It is well respected and will give you great satisfaction of dealing with some advanced concepts. It should not be pursued unless you enjoy the subject.

What kind of topics will I be studying?

The course consists of 3 modules taught over 2 years.

Pure Mathematics (Paper 1 and 2 of the A Level course):

This course carries on from where GCSE finishes in terms of the algebra, trigonometry and graphical knowledge. Some of the topics in the first year will be familiar to you. We will endeavor to deepen your understanding of these ideas as well as move on to new concepts. This will include a methodical study of certain families of curves and developing strategies to solve harder equations. Rather than remembering a long list of different techniques for different problem the challenge is to get a sense of the big ideas that can be applied to numerous scenarios.

Statistics and Mechanics (Paper 3 of the A Level course)

This section of Maths builds on from GCSE statistics and deepens your understanding of various skills like hypothesis testing and normal binormal distribution. There is a section on Mechanics which builds on from GCSE Physicals – motion and forces.

Subject Content

1. Measurements and their errors
 2. Particles and radiation
 3. Waves
 4. Mechanics and Materials
 5. Electricity
 6. Further mechanics and thermal physics
 7. Fields and their consequences
 8. Nuclear physics
- Options from:
9. Astrophysics, Medical Physics, Engineering Physics, Turning points in Physics or Electronics

Assessments

The course is assessed fully at the end of the 2 years. It consists of three exam papers which are 2 hours long each: Pure Maths 1, Pure Maths 2 and Applied Maths.

Progression/Career opportunities

What other subjects combine well with this course? Mathematics directly supports many subject – the sciences, computer science, economics and combines well with the social sciences, business studies and ICT. Math's degree is a highly desirable degree to pursue, and many students take it as a contrast to Modern Foreign Languages, English and Art. The analytical nature of the course means that it can be beneficial for all career paths.

Where might it lead?

Math's enables you to be a critical thinker and this is a good subject to select for any career path. It gives you the life skills to understand the problem and then make calculated outcomes. It is vital for mathematics, engineering, physics, computer science, some economics courses and an increasing number of medicine courses at university. It is also very useful for social sciences and all analytical subjects. Learners will be looking to progress into STEM careers, such as Theoretical Physics, Computer Science or engineering, Successful earners will be able to progress into higher education to study degrees, such as:

- Physics (BSc)
- Astrophysics (BSc)
- Aeronautical Engineering (BSc)
- Chemical Engineering(BSc)
- Electronical Engineering(BSc)

A scientific calculator will be required.

Further information:

Mr M Aubdool– Head of KS5 Mathematics
Mohammed.Aubdool@walthamstow-academy.org

Mr S Hussain – Head of Mathematics
Sheraz.Hussain@walthamstow-academy.org

Further Mathematics A Level



Exam Board: Edexcel

Entry Requirements: GCSE Grade 7 in Maths

Subject Content

Core Pure Mathematics 1&2
Further Mathematics 1&2

This Pearson Edexcel Level 3 Advanced GCE in Further Mathematics builds on the skills, knowledge and understanding set out in the whole GCSE subject content for mathematics and the subject content of the Pearson Edexcel Level 3 Advanced Subsidiary and Advanced GCE Mathematics qualifications. Problem solving, proof and mathematical modelling will be assessed in further mathematics in the context of the wider knowledge which students taking A Level mathematics will have studied.

Assessments

The course is assessed through four externally examined papers.

Progression/career opportunities

Learners will be looking to progress into STEM careers, such as Theoretical Physics, Computer Science, or Engineering.

Successful earners will be able to progress into higher education to study degrees, such as:

- Physics (BSc)
- Astrophysics (BSc)
- Aeronautical Engineering (BSc)
- Chemical Engineering (BSc)
- Electronic Engineering (BSc)

Further information:

Mr M Aubdool – Teacher in charge of KS5 Mathematics
Mohammed.Aubdool@walthamstow-academy.org

Mr S Hussain – Head of Mathematics
Sheraz.Hussain@walthamstow-academy.org

Skills gained and enrichment opportunities

The aims and objectives of this qualification are to enable students to:

- Understand mathematics and mathematical processes in ways that promote confidence, foster enjoyment and provide a strong foundation for progress to further study
- Extend their range of mathematical skills and techniques
- Understand coherence and progression in mathematics and how different areas of mathematics are connected
- Apply mathematics in other fields of study and be aware of the relevance of mathematics to the world of work and to situations in society in general
- Use their mathematical knowledge to make logical and reasoned decisions in solving problems both within pure mathematics and in a variety of contexts, and communicate the mathematical rationale for these decisions clearly
- Reason logically and recognise incorrect reasoning
- Generalise mathematically
- Construct mathematical proofs
- Use their mathematical skills and techniques to solve challenging problems which require them to decide on the solution strategy
- Recognise when mathematics can be used to analyse and solve a problem in context and mathematical models that may be applied to solve them
- Make deductions and inferences and draw conclusions by using mathematical reasoning
- Interpret solutions and communicate their interpretation effectively in the context of the problem

Exam Board: Eduqas

Entry Requirements: GCSE Grade 6 English, Grade 6 in Media or grade L2M in BTEC media if taken

Units Studied in Year 12

Section A : Anatomy and Physiology
Section B : Skill Acquisition
Section C : Sport and Society
Practical Performance

Units Studied in Year 13

Section A : Physiology and Biomechanics
Section B : Sport Psychology
Section C : Sport, Society and Technology
Practical Performance



Assessments

Paper 1

Factors Affecting Participation, 35% of grade, 2-hour exam.

Section A: Anatomy and Physiology.

Section B: Skill Acquisition

Section C: Sport and Society

Paper 2

Factors Affecting Optimal Performance, 35% of grade, 2 hour exam.

Section A : Physiology and Biomechanics

Section B: Sport Psychology

Section C : Sport, Society and Technology.

Practical Performance

30% of grade

- Assessed as a performer or coach in a full sided version of one activity
- Written analysis of performance

Skills gained and enrichment opportunities

Students will gain a broader knowledge of sport and exercise as well as the factors affecting both. This is the perfect step up from GCSE PE and BTEC sport to stretch and expand awareness of everyday sporting issues.

Progression/career opportunities

This course will enable students to progress to higher education courses at university as well as jobs in a range of areas including sport science sport psychology, physiotherapy, sports journalism, sports analysis amongst others.

Further information:

Ms A Bains– Head of Sixth Form

Amrita.Bains@walthamstow-academy.org



Physics A Level

Exam Board: AQA

Entry Requirements: Students require a Grade 6 in GCSE Physics or Grade 7-7 in Combined Science. Students also require at least a grade 7 in GCSE Mathematics.

Subject Content

1. Measurements and their errors
 2. Particles and radiation
 3. Waves
 4. Mechanics and Materials
 5. Electricity
 6. Further mechanics and thermal physics
 7. Fields and their consequences
 8. Nuclear physics
- Options from:
9. Astrophysics, Medical Physics, Engineering Physics, Turning points in Physics or Electronics

Skills gained and enrichment opportunities:

The A Level specification should encourage candidates to develop essential knowledge and understanding of the concepts relating to physics. This will encourage and develop the students through and problem – solving strategies, aid in the search for solutions to complex problems and issues. Students will develop skills such as working independently and as part of a team, strengthen their independent learning skills and will have opportunities to take part in discussions and attend conferences, university lectures and visit museums.

Progression/career opportunities:

There are many opportunities to study the following in higher education: Medicine, Pharmacy, Engineering, Electronic/ Civil Engineering and Aeronautics. Other career opportunities include: Research and Development, Teaching and fields related to Science.

Assessments

Paper 1:

- Any content in sections 1 to 5 and 6.2
- 2 hours written exam paper worth
- 34% of A-Level course.

Out of 85 marks:

- 60 marks: Mixture of short and long answer questions.
- 25 multiple choice questions on content.

Paper 2:

- Sections 6.2 Thermal Physics, 7 and 8.
- 2 hours written exam paper worth 34% of A-Level course.

Out of 85 marks:

- 60 marks: Mixture of short and long answer questions.
- 25 multiple choice questions on content.

Paper 3:

- Section A compulsory section on practical skills and data analysis & section B from optional list.
- 2 hours written exam paper worth 32% of A Level course.

Out of 80 marks:

- 45 marks: Mixture of short and long answer questions on practical experiments and data analysis.
- 35 marks of short and long answer questions on optional topic.

Further information:

Mr N Patterson – Head of Physics

Nigel.Patterson@walthamstow-academy.org

Mr S Kelly - Head of Science

Sam.Kelly@walthamstow-academy.org



Exam Board: AQA

Entry Requirements: GCSE Grade 6 English Language, Grade 6 in Psychology or Maths

Subject Content

Psychology will help you understand yourself and other people by learning about different aspects of human behavior that will help you in daily life, including your interactions with others, you're learning and memory performance, your ability to cope with pressure and your understanding of the causes of psychological orders.

Paper 1 : Introductory Topics in Psychology

This unit includes learning about social influence (why we obey, conform and change the majority's point of view), memory (how it works, why we forget and how memory works with crime), attachment (how our relationships with caregivers as children affect us as adults) and psychopathology (how mental health disorders affect people and how they are treated).

Paper 2 : Psychology in Context:

This unit includes learning about the different schools of psychology from behaviorist to biopsychology, how stress is registered and how human behavior is studied as a psychological science.

Paper 3: Issues and Options in Psychology:

This unit includes learning about psychological debates (such as is it nature or nurture that is more important), gender (differences in male and female brains and stereotypes), schizophrenia (what it is, the different causes and treatment), and aggression.

Assessments

A Level Psychology is a linear subject, assessed at the end of two years of study. The AQA examination board uses three examinations to assess you. Each of these exams comprises several short questions, essay questions and scenarios to which you are required to apply your knowledge.

A Level Psychology involves studying a wide range of topics, so there is a lot of information to absorb, and importantly, you will need to learn how to apply and evaluate (weight up the strengths and weakness) of these studies and theories. Psychology develops a range of valuable skills, including critical analysis, independent thinking and research. These skills are particularly relevant to young people and are transferable to further study and the workplace. There will be opportunity to go on trips to conferences, museums in addition to hearing from speakers invited into the academy (I.E psychologists and hypnotists).

Progression/career opportunities:

A degree in Psychology does not require you to have studied Psychology A Level. However, many courses ask for a science subject, of which Psychology is one. A Level Psychology will provide you with the skills required of an undergraduate – an inquiring mind and the ability to use scientific research findings to support and challenge various claims about why people behave the way they do.

The A-Level course demonstrates a broad range of skills from essay writing and critical thinking to data handling and statistics. Achieving an A Level in Psychology indicates that you are numerate and literate as well as being able to engage in scientific enquiry.

Further information:

Ms M O'Brien - Head of Psychology

Melanie.O'Brien@walthamstow-academy.org



Religious Studies A Level

Exam Board: OCR

Entry Requirements: Grade 6 or above in a Humanities subject & 6 in English Language

Subject Content

Component 1: Philosophy of religion

Students study philosophical language and thought, and issues and questions raised by belief:

- Ancient philosophical influences the nature of the soul, mind and body
- Arguments about the existence or non-existence of God
- The nature and impact of religious experience
- The challenge for religious belief of the problem of evil
- Ideas about the nature of God
- Issues in religious language.

Component 2: Religion and ethics

Students explore key concepts and the works of influential thinkers, ethical theories and their application:

- Normative ethical theories
- The application of ethical theory to two contemporary issues of importance
- Ethical language and thought
- Debates surrounding the significant idea of conscience
- Sexual ethics and the influence on ethical thought of developments in religious beliefs.

Component 3: Developments in Christian thought

They explore:

- Religious beliefs, values and teachings, their interconnections and how they vary historically and in the contemporary world
- Sources of religious wisdom and authority
- Practices which shape and express religious identity, and how these vary within a tradition
- Significant social and historical developments in theology and religious thought.

Assessments

Component	Marks	Duration	Weighting
Philosophy of religion	120	2 hours	33⅓%
Religion and ethics	120	2 hours	33⅓%
Development in Christian thought	120	2 hours	33⅓%

Skills gained and enrichment opportunities:

- Develop their interest in a rigorous study of religion and belief and relate it to the wider world
- Develop knowledge and understanding appropriate to a specialist study of religion
- Develop an understanding and appreciation of religious thought and its contribution to individuals, communities and societies
- Adopt an enquiring, critical and reflective approach to the study of religion
- Reflect on and develop their own values, opinions and attitudes in the light of their study

Progression/ Career opportunities:

Open doors to teaching, charity, and equality, diversity and inclusion jobs. Links to a variety of other careers from law to business. Students will have the opportunity to attend workshops related to the course, as well as meet with guest speakers and influential thinkers.

Further information:

Ms L Hamilton – Head of Religious Education

Lashanna.Hamilton@Walthamstow-academy.org

Sociology A Level



Exam Board: AQA

Entry Requirements: GCSE Grade 6 in English Language and Literature

Subject Content

Do you find yourself asking – but why? A Level sociology is the study of society. Sociology is an exciting, radical and critical subject. It's about exciting radical and critical subject. It's about digging below the surface, to find out what it is really going on. Sociology is a challenging subject, where you will have the opportunity to develop thinking skills. During the course will use sociological tools of theory, research, concepts to help you evaluate the world around you. It's the best subject!

Paper 1: Education with Theory and Methods

For this paper, we get to explore the Education system. We examine what role the education system plays in our everchanging society. We look at hoe education has changed over time as well as delving into why some people achieve in education and others not. In addition to this we also look at theory and methods. This involves studying key theories in Sociology and understanding how they see society, whilst also studying a range of exciting research methods.

Paper 2: Topics in Sociology

For this paper, we still study two topics: Families & Households as well as Beliefs in society. Within Families & Households, we look at the most common family type in the UK, reasons for the changes in the patter of marriage and divorce. We also examine childhood and discuss how it has changed from historical view, how childhood is seen from a cultural viewpoint as well as the idea that we have become more child centered society.

Paper 3: Crime & Deviance with Theory & Methods

For this paper, we will explore why and indeed if some social groups commit more crimes than others, we will examine if statistics on crime tell us a true picture. Within this paper, we will look at Theory and Methods and home in on which research methoc is favored by particular theorists and consider why.

Assessments

Examinations take place at the end of Year 13 and will comprise of three papers. Each exam paper will be two hours long and is worth a third of the final grade. Paper and Paper 3 will contain a mixture of short and long answer questions, while Paper 2 will contain extended writing tasks.

Skills gained and enrichment opportunities

The aims of the course are to encourage you to develop a broad knowledge and a critical understanding of contemporary and changing word that surrounds you. A Level Sociology will nurture your inquiring mind and give you the opportunity to debate with like-minded people about the issues that impact our daily lives. You will have the opportunity to understand and evaluate sociological methodology through having an active involvement in the sociological research process. These skills are imperative as you progress onto university. Student will be able to take part in conferences and enjoy guest speakers sharing their research in the sociological field.

Progression/career opportunities

A Level Sociology will compliment other A Level courses, such as the sciences and humanities subjects. Students will be able to progress onto a few university courses and career opportunities including law, social work, teaching and research, the Police Force, HR Officer, Life Coach, Probation Worker, PR Officer, Marketing Executive and SENCO.

Further information:

Ms N Shabir – Teacher of Sociology
Nusrat.Shabir@walthamstow-academy.org
Ms M O'Brien - Head of Social Sciences
Melanie.O'Brien@walthamstow-academy.org

...best lesson, best day, best year, best future...



Walthamstow Academy

The best in everyone™

Part of United Learning

**For further information, please contact our
Admissions Officer at:**

Walthamstow Academy
Billet Road
Walthamstow
London
E17 5DP

Telephone: 020 8527 3750

Email: info@walthamstow-academy.org

Website: www.walthamstow-academy.org

Walthamstow Academy / UL policies include those on admissions, anti-bullying, behaviour (rewards and sanctions), charging and remissions, child protection, complaints, education, ethos, health and safety, rights of withdrawal from religious education and worship and special educational needs are available on request.